

➤ S-6000E

Cigarette Making Machine

M7000 / F80 Tray Filler

Speed up to 6000 CPM



➤ S-6000E

Machine Specs

S-6000E	
Machine Model	: S-6000E Cigarette Making Line
Cigarette Cir.	: 17mm – 28.3mm
Filter + Tobacco Rod Length	: 65mm - 110mm
PLC Control System	: SIEMENS PLC
Servo System	: Lenze or Yaskawa
Weight Control	: Microwave System
Production Capacity	: 6,000cpm (Regular Dia)
	: 5,000cpm (Slim & Super Slim)
Machine Unit	: S6000E Cigarette rod Maker
	: M7000 Filter Tip Attachment
	: F80 Auto Tray Filler
Power	: S6000E / 40KW
	: M7000 / 20KW
	: F80 / 15KW
Total Weight	: 14,250 KG

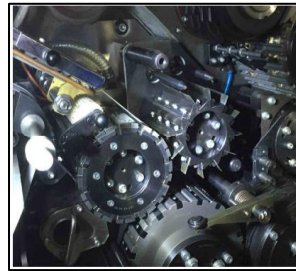


➤ S-6000E

Machine Specs



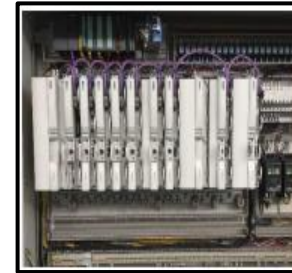
**Microwave
Weight Control
Scanning Head**



Shear Cut Unit



**New Type
Turning Drum**



**Independent
Driver**



**New Type Bobbin
Changer and Splicer**



Protos Type Bobbin Changer and Printer



**Protos type Cut-Off and
Spider**

➤ Contact Information



Phone

+62778411777



Whatsapp

+6281364074768



Email

info@djitoemesindo.com